

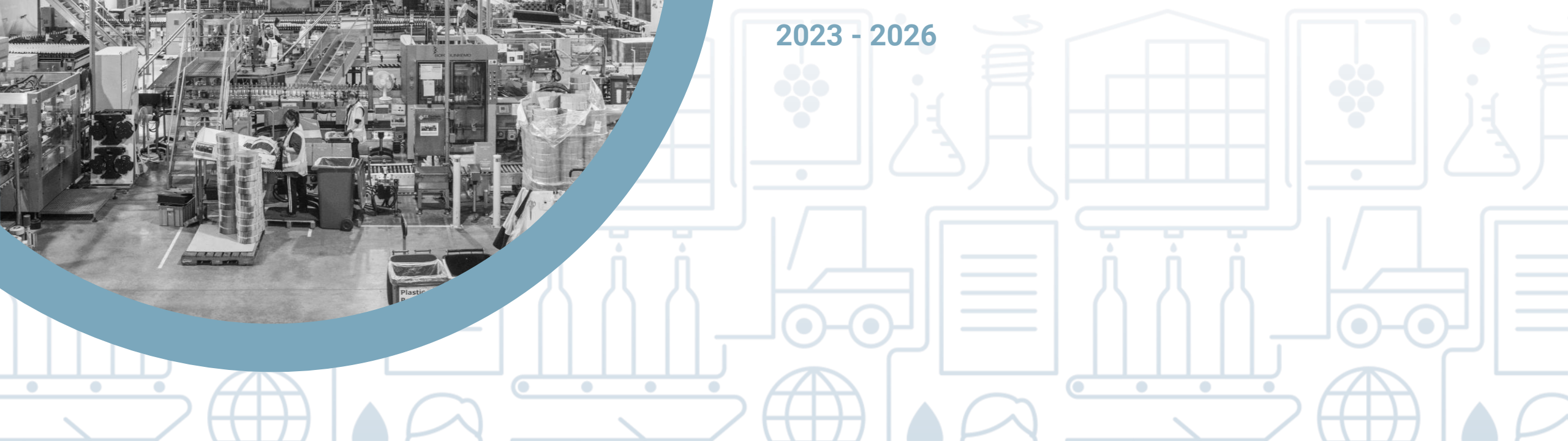


WINeworks

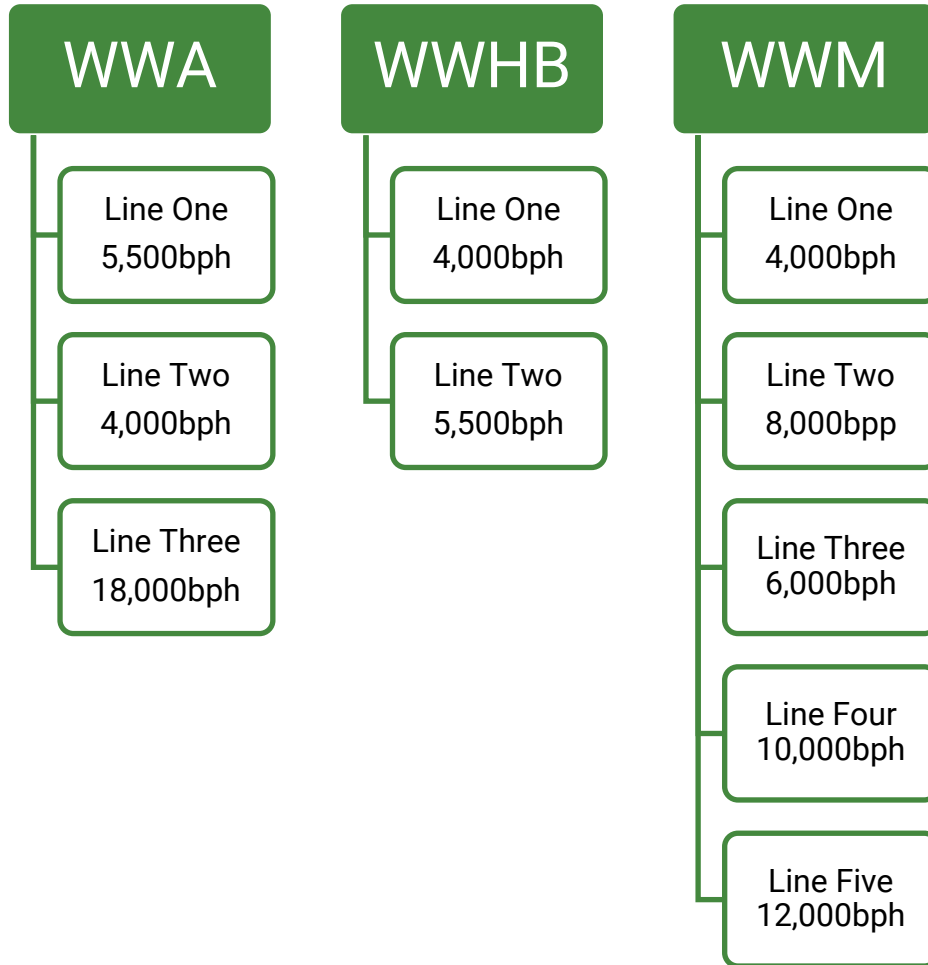


# WineWorks Group Capacity Plan

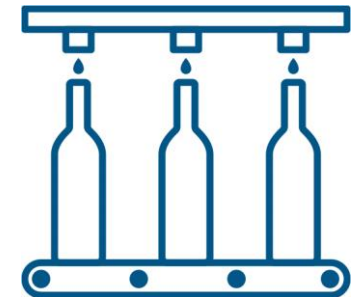
2023 - 2026



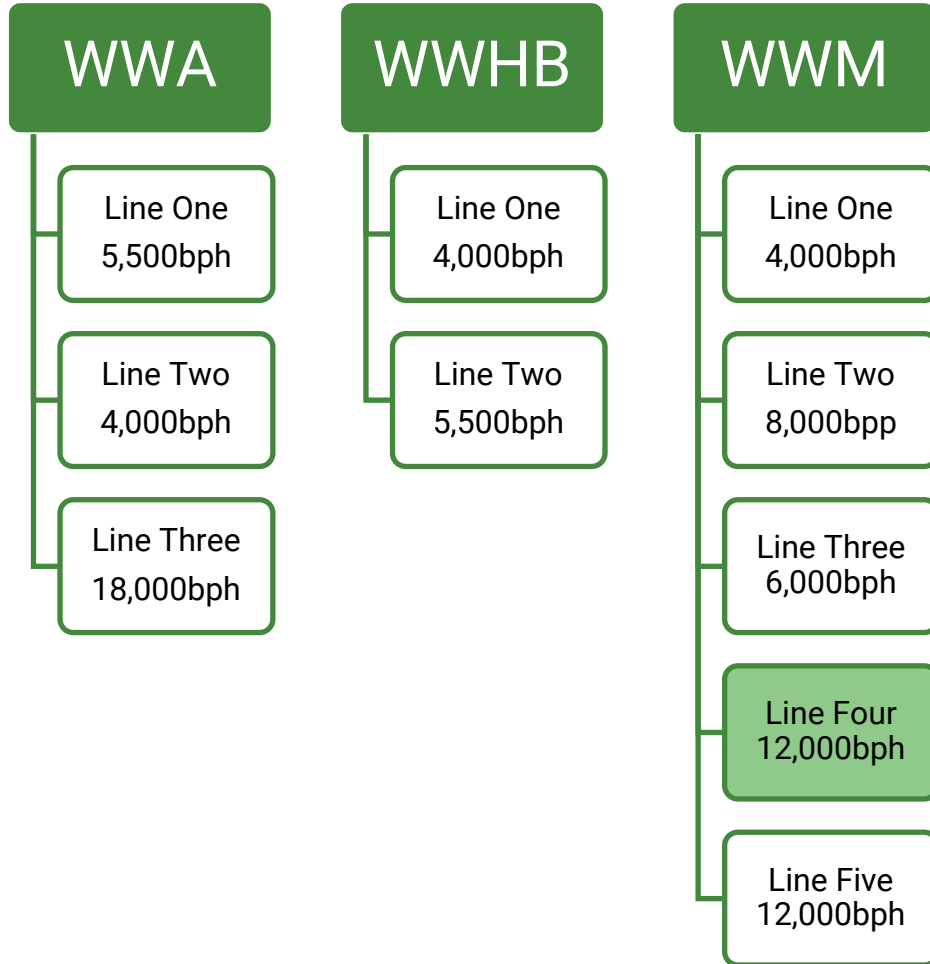
# Current 2022:



Current 'bottle per hour' (bph) bottling capacity on all lines across the three WineWorks' sites.



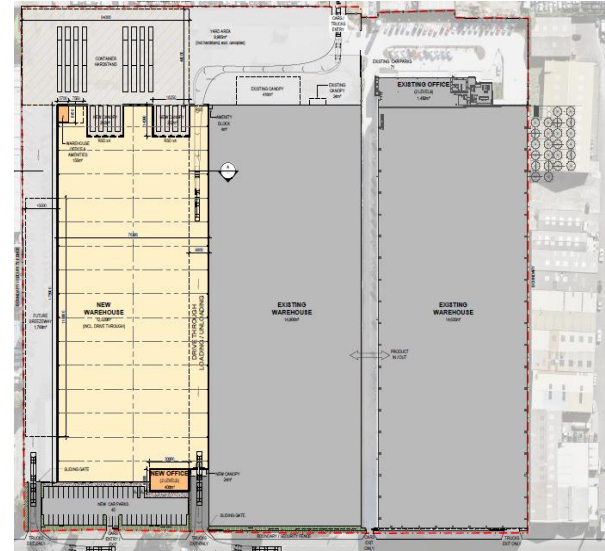
# May 2023:



New 12,000bph MBF Filler installed into WW Marlborough Line 4, replacing current Alfatech filler.

This will be a 20% speed increase on this line, resulting in 0.3m cases additional capacity per annum.

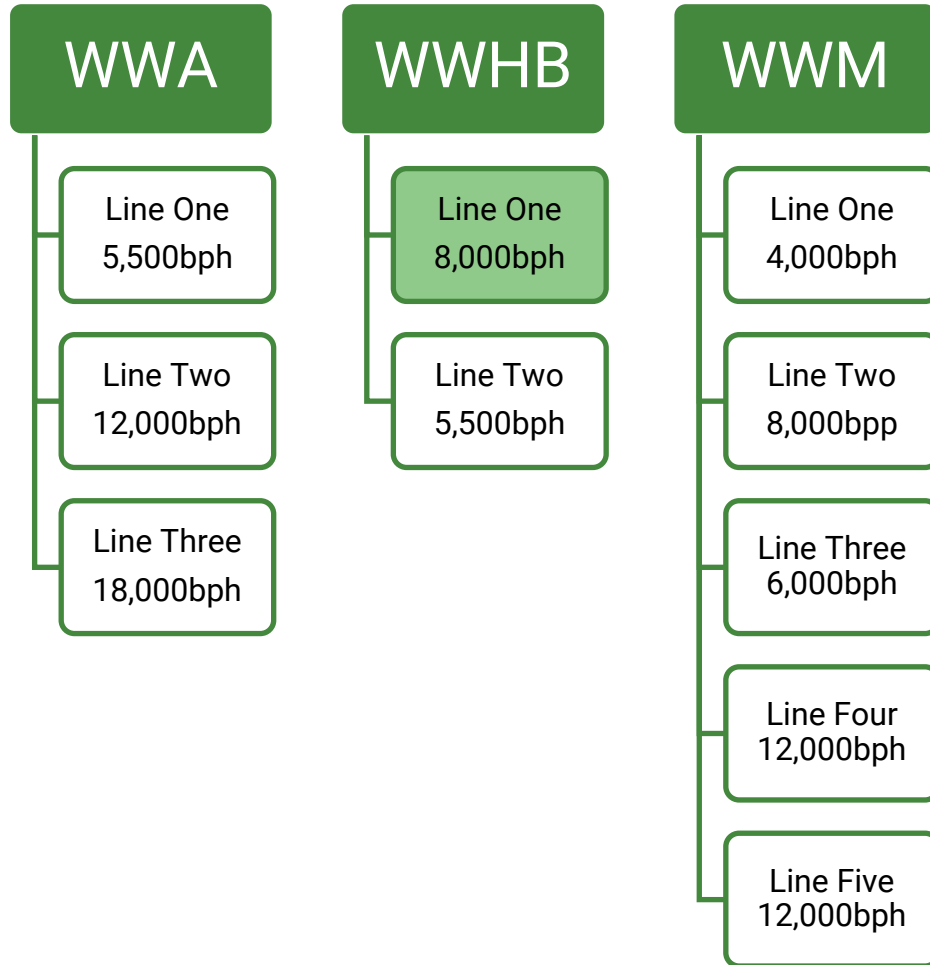
# September 2023:



Construction of the new Visy Glass storage and finished goods export facility is underway right next to our WW Auckland site.

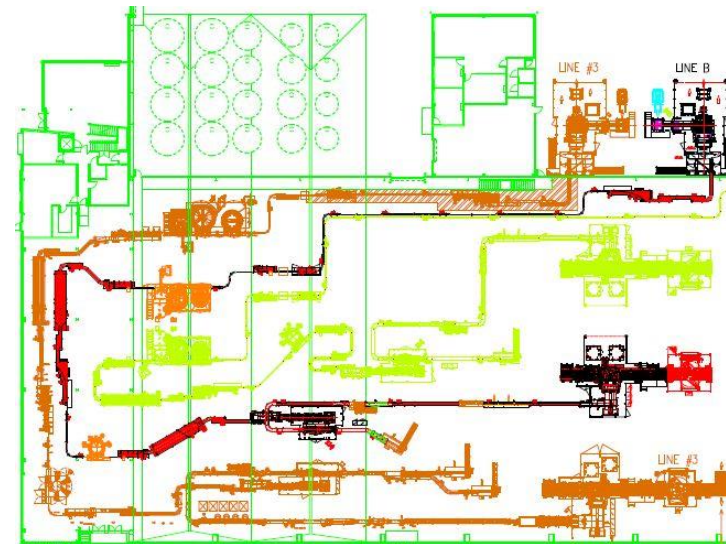
This will allow for efficient, sustainable glass deliveries into WWA, and export container loading out - making it the sweet spot of the wine industry supply chain.

# Q1 2024:

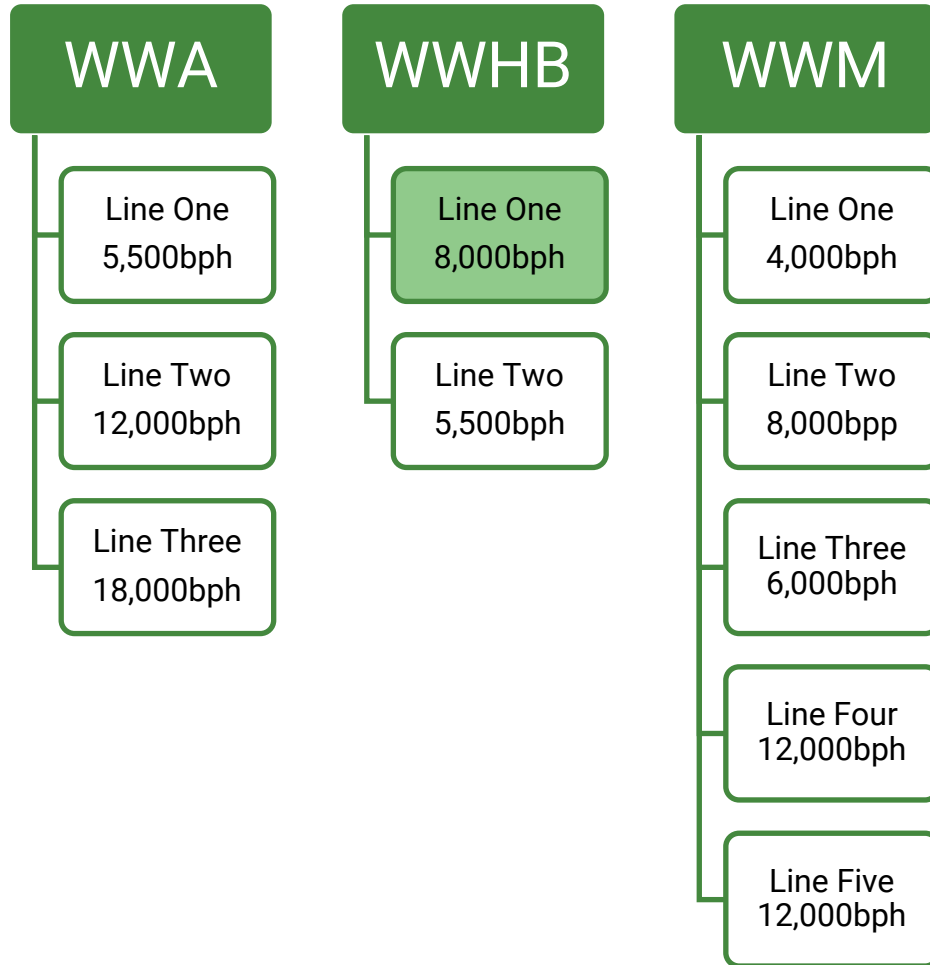


New 12,000bph bottling line installed into WW Auckland to replace the current 4,000bph Line 2.

This will increase daily output by 7,500 cases per day, and overall annual output by 1.65m cases.



~2024: (to be confirmed)



Increase capacity of WW Hawke's Bay Line One from 4,000bph to 8,000bph.

We are currently assessing supplier options but this will give ~0.6m cases additional capacity per annum



# Additional

## Operational Improvements

- Constant focus on improvement of OEE
- Focus on dry goods quality
- Investigation of Shift pattern changes to increase operational uptime
- Investigating increasing capacity of WWM Line two from 8 to 12k bottles/hr through machinery replacement
- Focus on working with clients to ensure efficient scheduling of bottling runs

## Total Investment

- \$52m in additional bottling capacity and warehousing infrastructure over the next 18 months

## Capacity Increase Summary:

Marlborough	May – 2023	+0.3m cases
Auckland	2024 – Q1	+1.65m cases
Hawkes Bay	2024 - TBC	+0.6m cases
		<b>+2.55m cases</b>