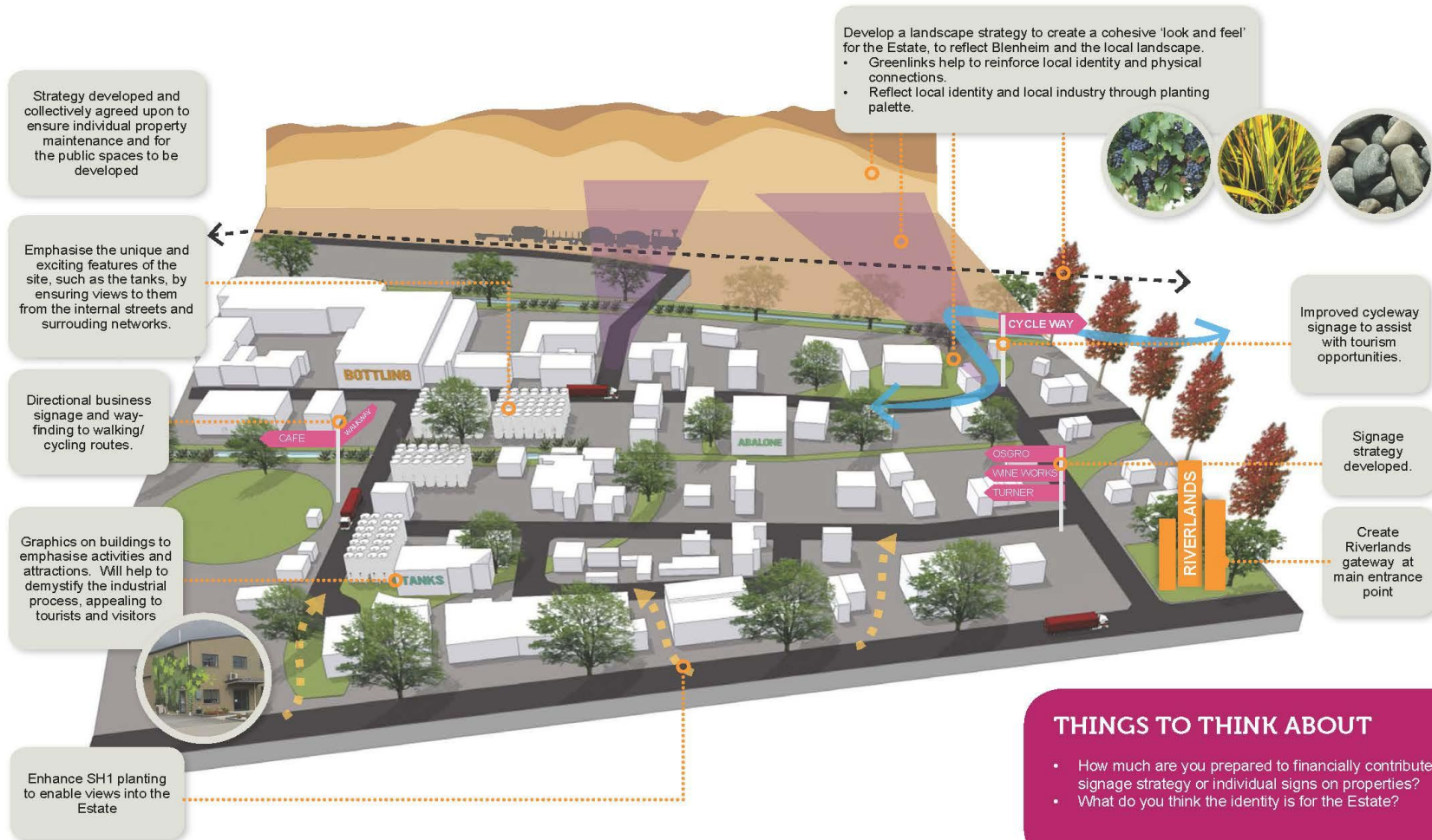


# RIVERLANDS ESTATE

## ENHANCEMENT STRATEGY



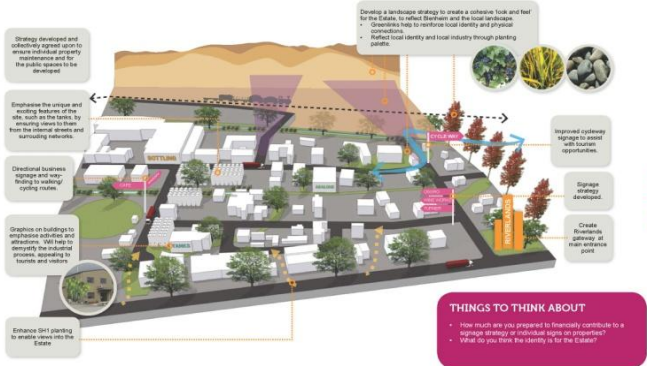
## CREATE AN IDENTITY FOR RIVERLANDS ESTATE



DRAFT

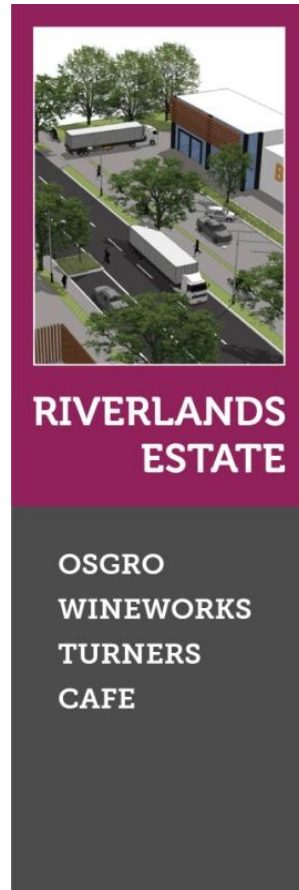
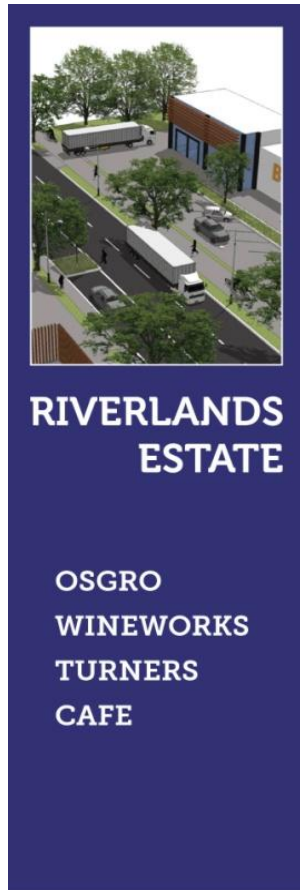
**THINGS TO THINK ABOUT**

- How much are you prepared to financially contribute to a signage strategy or individual signs on properties?
- What do you think the identity is for the Estate?



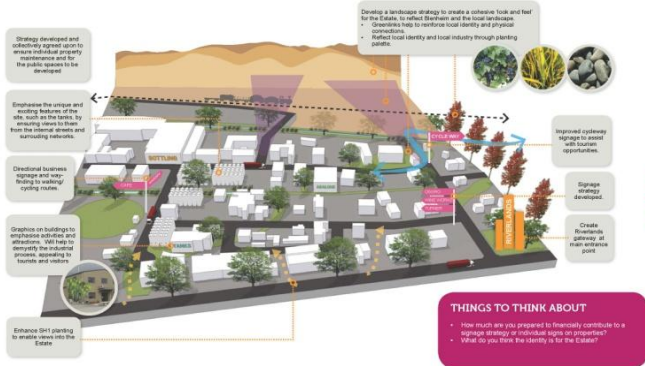
# The Estate – Primary Sign Examples

Primary signage leads people (visitors and staff) to the site

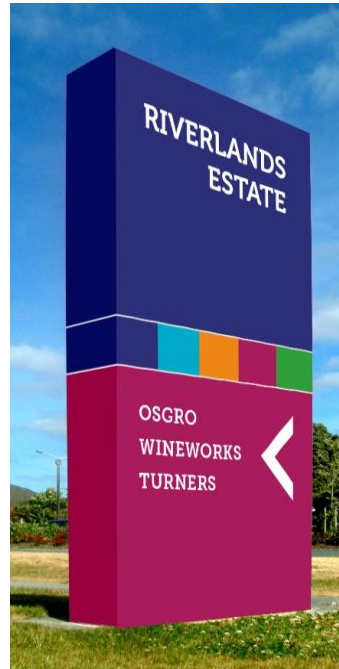




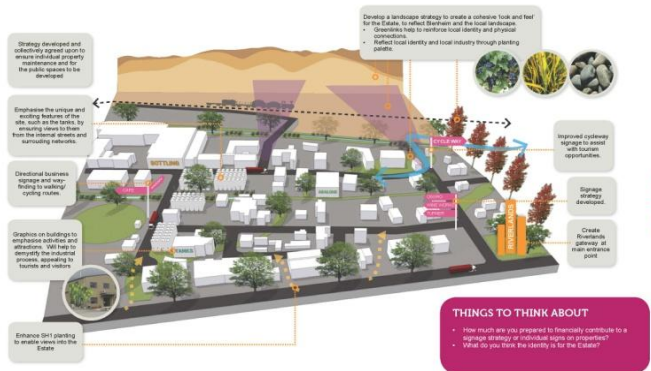




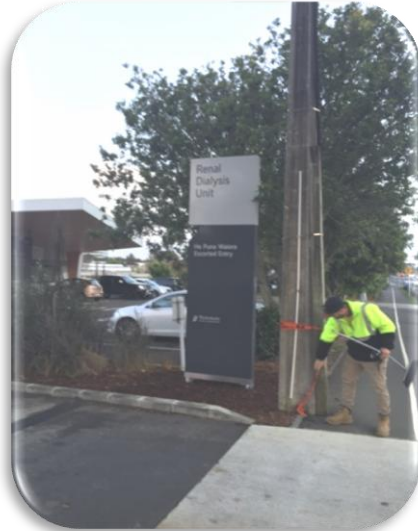
# The Estate – Secondary Signs (more examples)



CREATE AN IDENTITY FOR RIVERLANDS ESTATE



DRAFT





Exterior Primary Signs



Billboard frames with digitally printed ACM panels



ACM printed hoardings



# Wayfinding Signs



## Door plaques

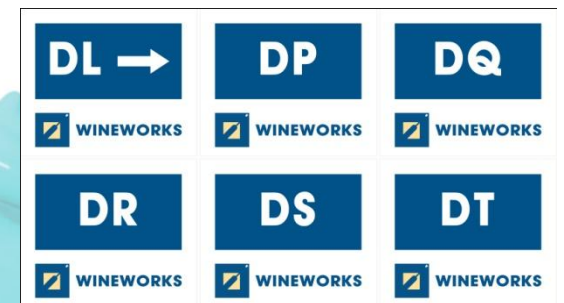
|                      |                           |                  |                       |
|----------------------|---------------------------|------------------|-----------------------|
| Laboratory           | Laboratory                | Client Lounge    | Training Room         |
| Board Room           | Meeting Room              | Visitors Toilet  | Production Office     |
| Engineering Workshop | Cellar/Engineering Office | Dry Goods Office | Administration Office |



Warehouse Rack Signs



Regulatory Signs



Unit Signs



**Waitemata District Health Board, North Shore Hospital**  
**Supply and install exterior and interior signage**  
Project in progress, due for completion 19 May 2015

**Wayfinding Signs**

**Electrical** – Set up primary feed, dig and trench power to freestanding plinths on Shakespeare Road entrances



**Foundation Pads** – Excavation and boxing for foundation reinforcing cages and concrete





## Wayfinding Signs

Waitemata District Health Board, North Shore Hospital  
Supply and install exterior and interior signage  
Project in progress, due for completion 19 May 2015

Foundation Pads - Pre tied foundation cages



Foundation Pads - Concrete 30MPa

